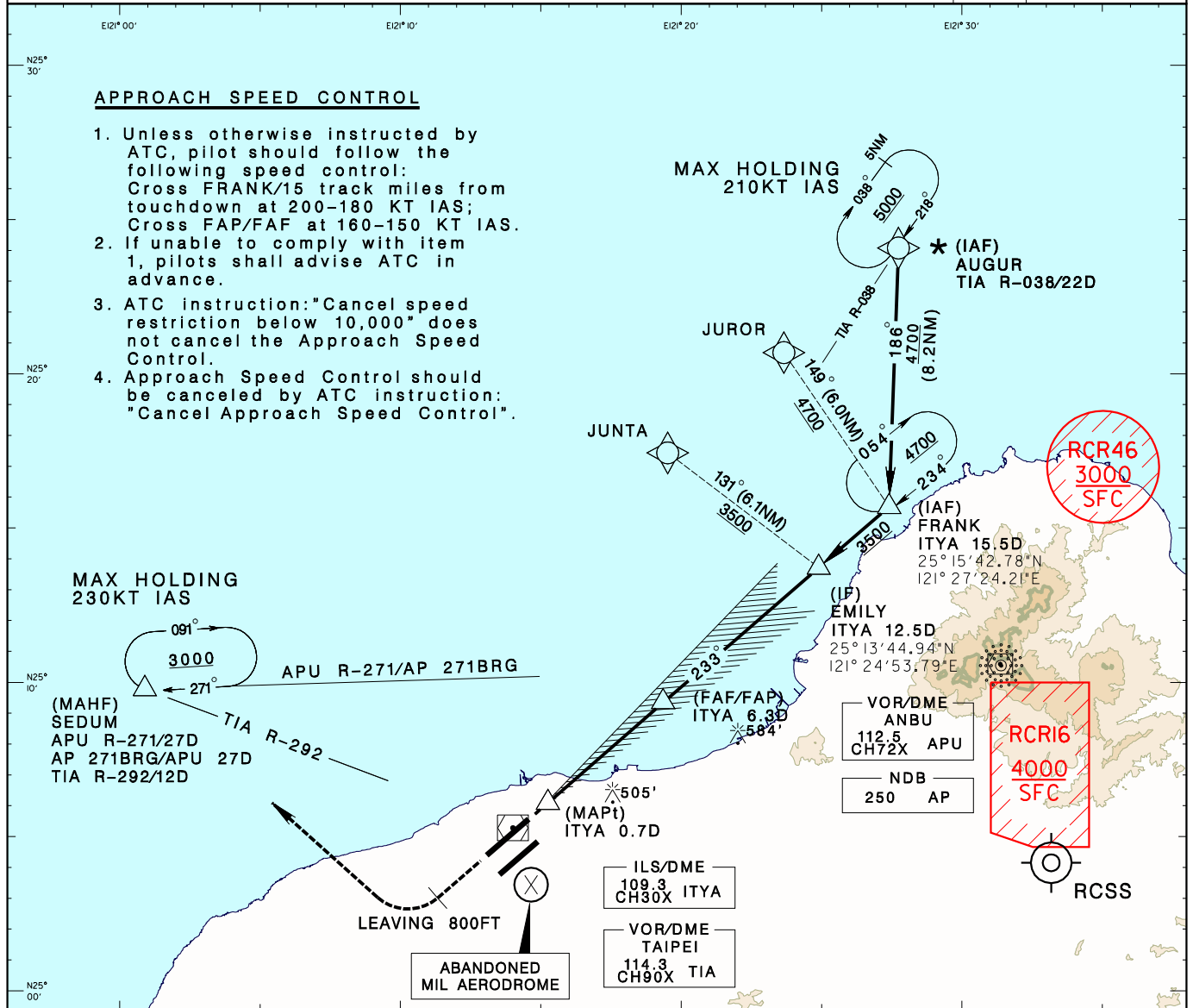


TAIPEI APP 125.1 128.5	TAIPEI TWR 118.7 129.3	ATIS 127.6	VAR 4° W	
Apt Elev: 108'	Rwy23R THR Elev: 63'	Trans Level: FL130		
BEARINGS ARE MAGNETIC; DISTANCES ARE NAUTICAL MILES; ELEVATIONS, HEIGHTS IN FEET				MSA TIA VOR 25NM

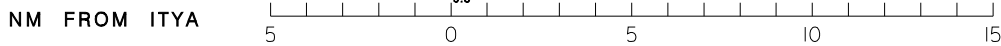
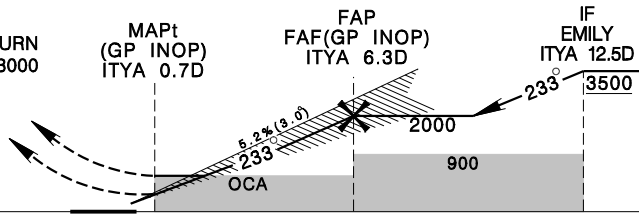
**APPROACH SPEED CONTROL**

- Unless otherwise instructed by ATC, pilot should follow the following speed control:  
Cross FRANK/15 track miles from touchdown at 200-180 KT IAS;  
Cross FAP/FAF at 160-150 KT IAS.
- If unable to comply with item 1, pilots shall advise ATC in advance.
- ATC instruction: "Cancel speed restriction below 10,000" does not cancel the Approach Speed Control.
- Approach Speed Control should be canceled by ATC instruction: "Cancel Approach Speed Control".



DIST to ITYA	2DME	3DME	4DME	5DME	6DME
ADVISORY ALT	700	1020	1340	1660	1970

MISSED APCH:  
CLIMB ON HDG 233 TO 800, THEN TURN RIGHT DIRECT TO SEDUM, MAINTAIN 3000 AND HOLD.  
\*NO TURN PRIOR TO MAPt.



**MINIMA (OCA IN FT, VIS IN M, OCH IN FT)**

CATEGORY		A	B	C	D
ILS	FULL	263/ 800 RVR550 200	270/ 800 RVR550 207	278/ 800 RVR550 215	288/ 800 RVR550 225
	TDZ/CL LGT OUT	263/ 800 RVR750 200	270/ 800 RVR750 207	278/ 800 RVR750 215	288/ 800 RVR750 225
	ALS OUT	263/ 1200 RVR1200 200	270/ 1200 RVR1200 207	278/ 1200 RVR1200 215	288/ 1200 RVR1200 225
LOC (GP INOP)	FULL	610/ 1200 RVR1200 547	610/1600 547	610/1800 547	610/1800 547
	ALS OUT	610/1600 547	610/1600 547	610/2500 547	610/2500 547
CIRCLING		880/1900 772	930/2800 822	1030/4400 922	1030/4800 922

- CIRCLING NOT AUTHORIZED SOUTHEAST OF RWY 05R/23L.
- \*TRAFFIC FROM TIA VOR SHOULD JOIN AUGUR HOLDING PATTERN FOR COURSE REVERSAL.
- RADAR MONITORING REQUIRED FOR MISSED APCH AND DEAD-RECKONING SEGMENT.  
\*DME REQUIRED.

REV: RWT23R THR ELEV, OCA, OCH